

Millimeter Wave Radar Real Presence Sensor

Code: 70400

Read these instructions before installation and retain for future reference.
This equipment should be installed by a competent electrician



Important Information

We recommend that luminaires are installed by a qualified electrician ensuring the installation complies with current IEE wiring regulations BS7671:2018 & local building control.

- All tests should be carried out in accordance to EN 50172:2004.
- BELL will not accept responsibility for any claims arising from poor installation.

Important User Advice

- The ambient temperature should not exceed 40°C.
- Ensure that there is adequate free air ventilation around the fitting.
- Always switch off mains supply before installing.



This product may contain substances that can be hazardous to the environment if not disposed of properly. Electrical and electronic equipment should never be disposed of with general household waste but must be separated for its correct treatment and recovery. Where possible recycle your packaging.

Introduction

This sensor uses 24GHz Millimeter Wave Radar technology Real Presence Sensor. With the ability to detect both large and small movements, such as hand movement, head movement and breathing.

Specification

Power Source: 220-240V/AC

Power Frequency: 50/60Hz

Ambient Light 10Lux/30Lux/100Lux Day 24H (adjustable)

Rated Load: Max.2000W LED 1000W

Detection Range: 360°

Detection Distance: 2-4m (radius) movement signal
 such as hand moving, head shaking 2-3 m (radius) breathe signal

Working Temperature: -20°~40°

Working Humidity: <93%RH

Power Consumption: approx 0.9W

Installation Height: 2-2.4m

Connection

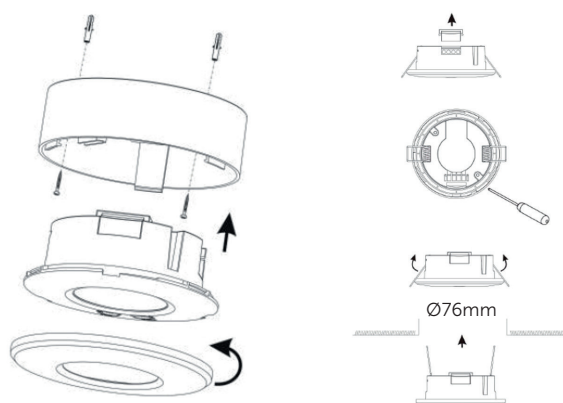
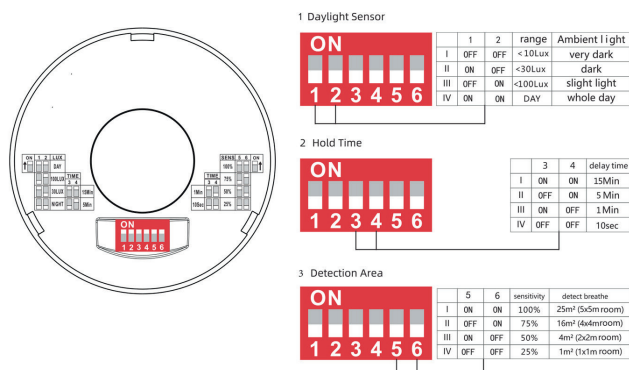
Remove the upper cover with anti-clockwise twist as per the diagram on the below.

Connect the power and the load according to the connection-wire diagram.

Fix the bottom on the selected position with the screw.

Fit in to the ceiling using the spring clips

Install back the upper cover on the sensor, switch on the power and test it.



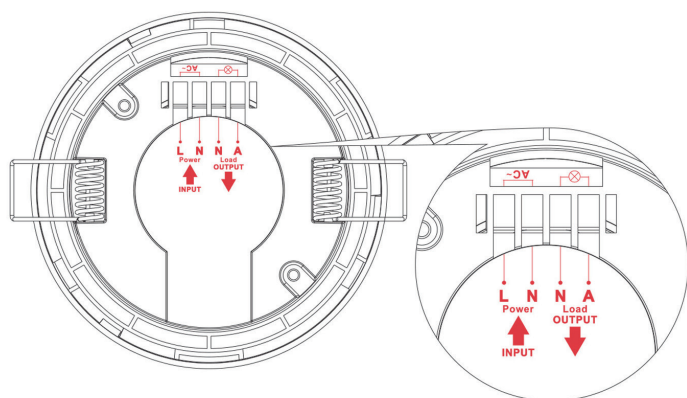
Millimeter Wave Radar Real Presence Sensor

Code: 70400

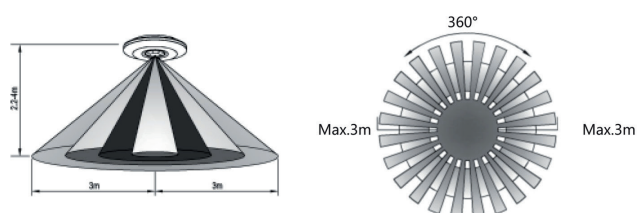
Read these instructions before installation and retain for future reference.
This equipment should be installed by a competent electrician



Wiring Diagram



Sensor Information



Installation Height: 2-2.4m
Detection Distance: Max. 6m

Note: The detection sensitivity is closely related to the height of the person under test, the moving speed, the installation position of the sensor, whether there is a barrier, and the reflection of metal or glass. the above data is the installation height of 3m, the height of the subject is 165cm, the moving speed is 0.3m/s, the human body is facing the sensor installation point, and the measurement is for reference only. Select the sensitivity based on the onsite installation environment.

Troubleshooting		
Malfunction	Reason	Solution
Sensor false triggering or cannot turn off.	Sensor can sense through the glass or wood or nonmetallic substance.	Turn down the sensitivity.
	Sensor install close to wireless devices.	Stay more than 2 meters away from the wireless equipment.
	Vibration or buffeting signals in the installation environment.	Make sure there are no other movement signals in the space such as vibrating devices, fans oscillating & curtains swinging.
The sensor can't detect anyone.	Installation location beyond the sensor signal coverage area.	Adjust installation position.
	The installation position is behind or on the side of the user.	Adjust the installation position Install in front of the person.
	The microwave signal was blocked by obstacles.	Adjust installation position away from obstacles.
	Ambient light illumination more then the set LUX of sensor.	<ol style="list-style-type: none"> 1. Check the environment for other luminous objects or lamps. 2. Adjust the lux or disable the test funtion of night and dark.